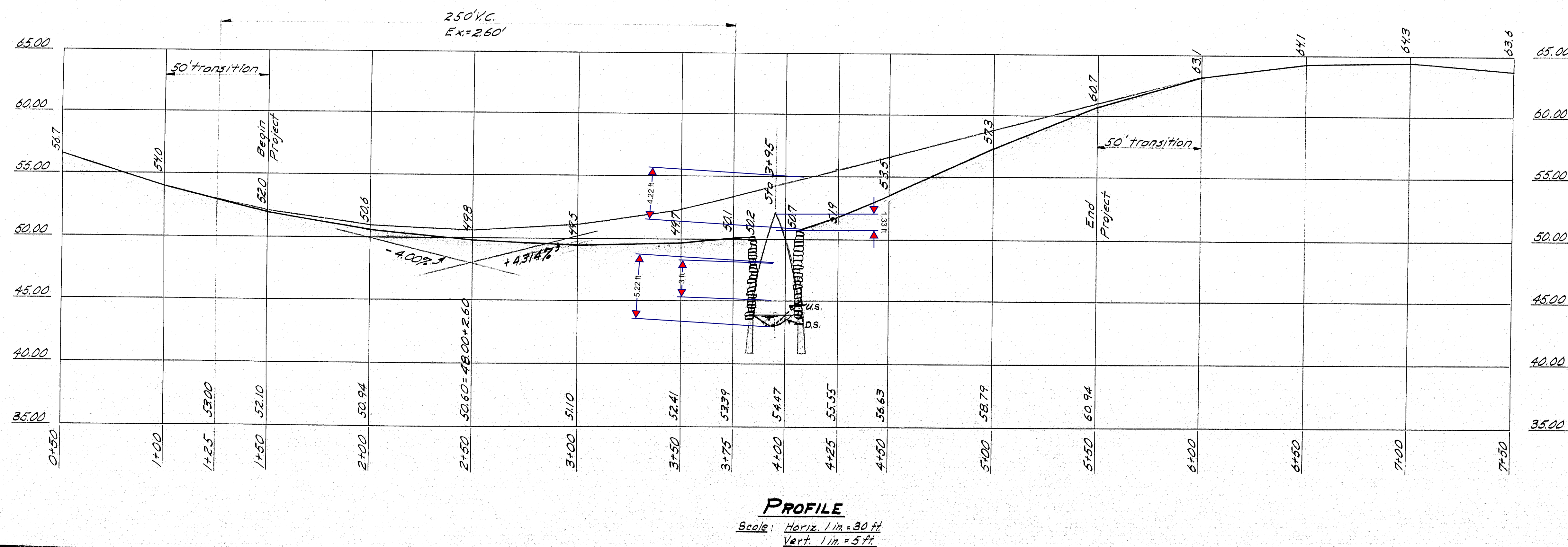
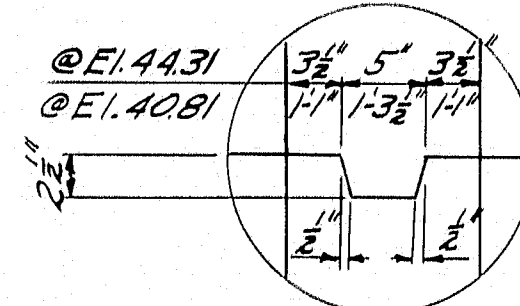
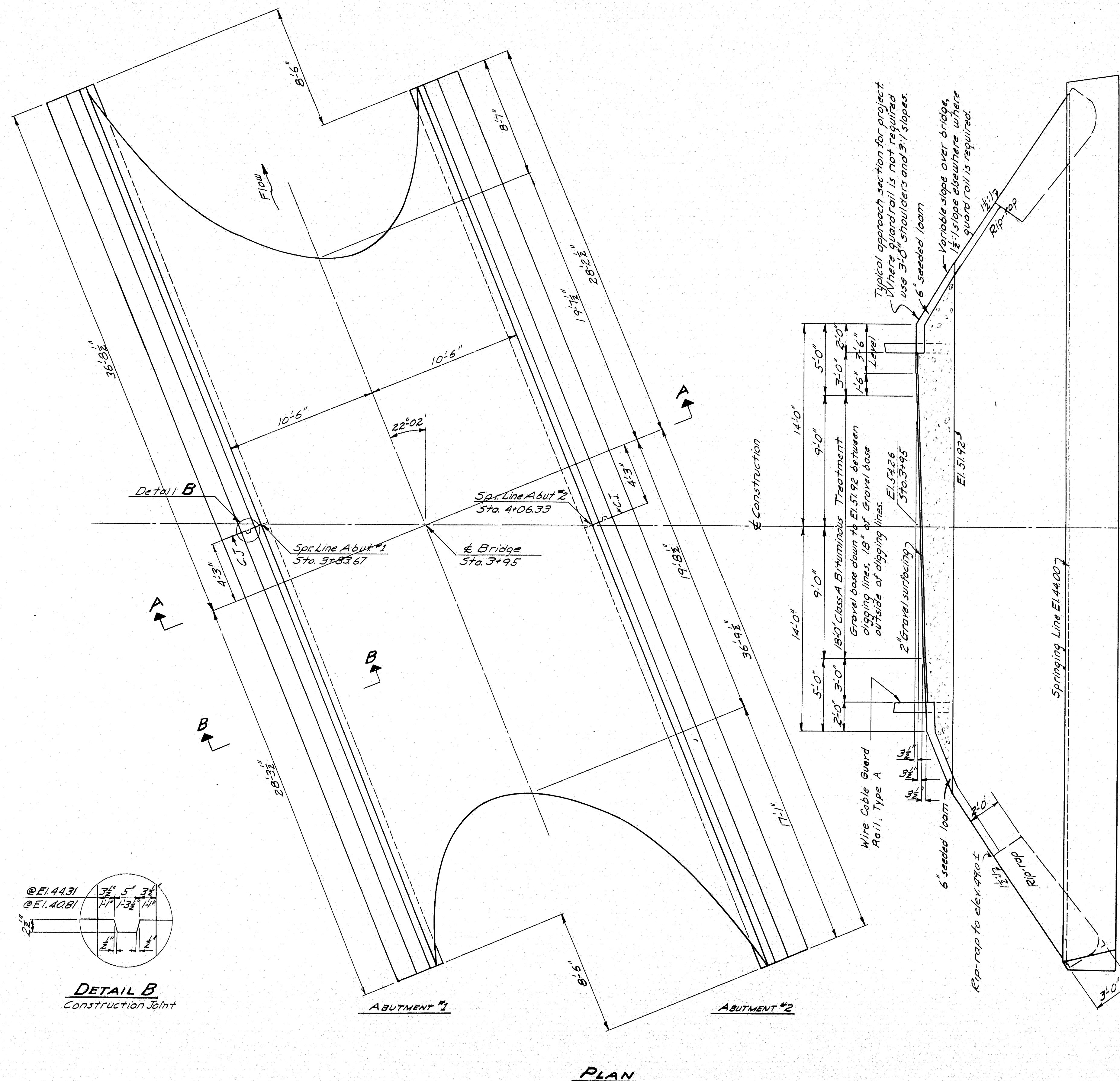


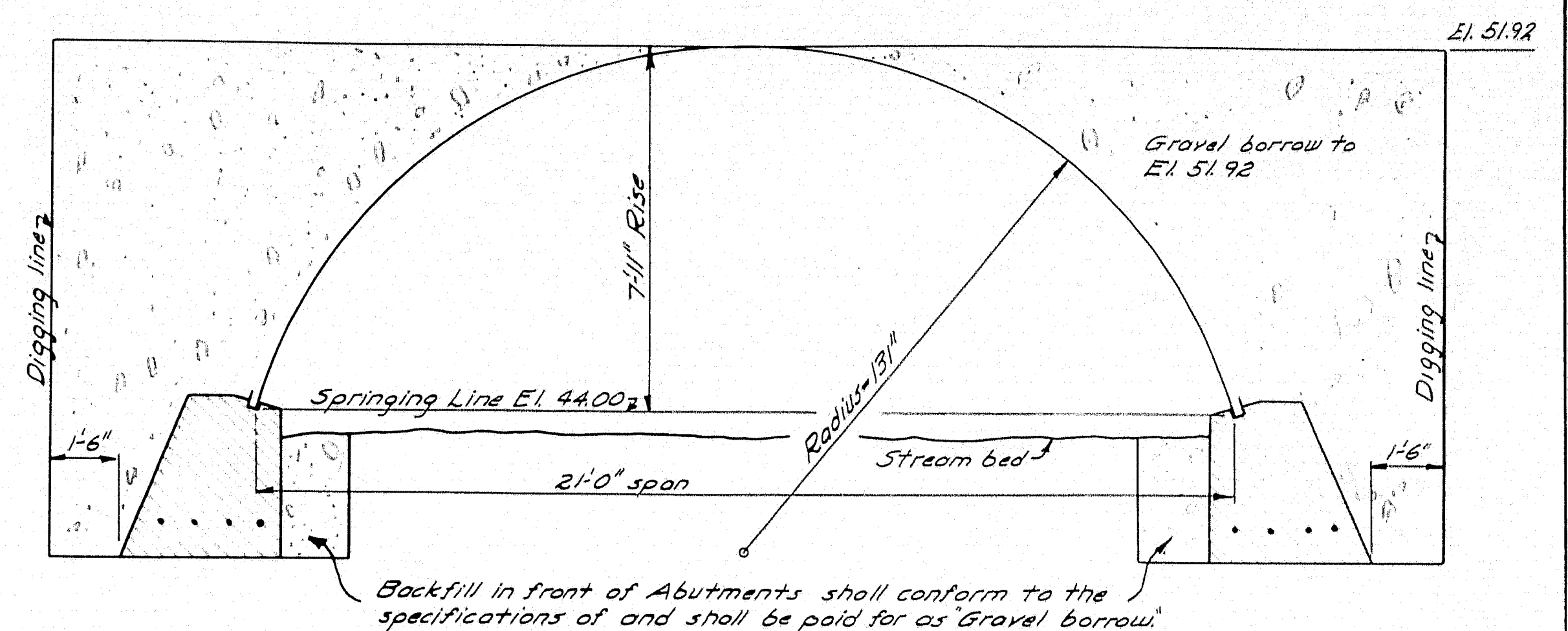
- NOTES**
- Existing Superstructure:**
 Two inch diagonal plank on three inch transverse plank (New). 4-15" steel I-beams @ center. 2-(12x12) square timbers. Two 12" round log stringers (outside) flatten wood.
- Existing Substructure:**
 Small flat ledge laid dry. Each abutment partially collapsed and lean in toward stream bed. Very poor.
- Stream:**
 Extreme high water over road. Ordinary high water @ 48.0.
- Foundation:**
 Sounding No. 1 - E bridge D.S. Rod penetrated 4.0' below water to refusal.
 Sounding No. 2 - E bridge U.S. Rod penetrated 5.0' below water to refusal. All sounding through boulders and clay. Hard driving.
- Approaches:**
 Surface treated gravel. Fair condition.



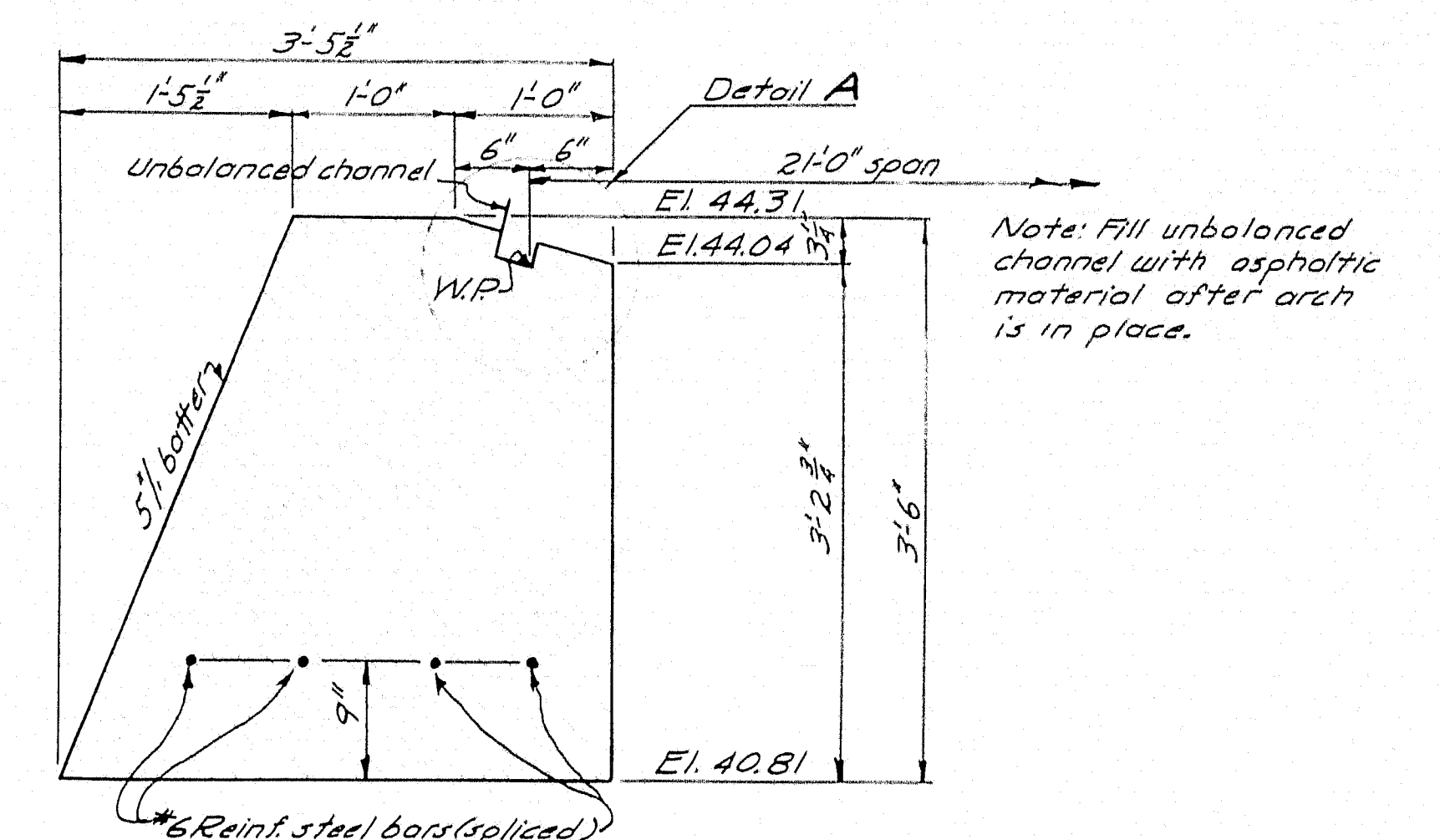
SURVEY—BLAKE PLOT—BACHELDER	BRIDGE—5557
STATE HIGHWAY COMMISSION BRIDGE DIVISION	
SHELDON BRIDGE	
OVER	
WARREN BROOK	
IN THE CITY OF	
BELFAST	
WALDO COUNTY	
SURVEY	
SHEET / OF 3	AUGUSTA, MAINE OCT. 1952



DETAIL B
Construction Joint



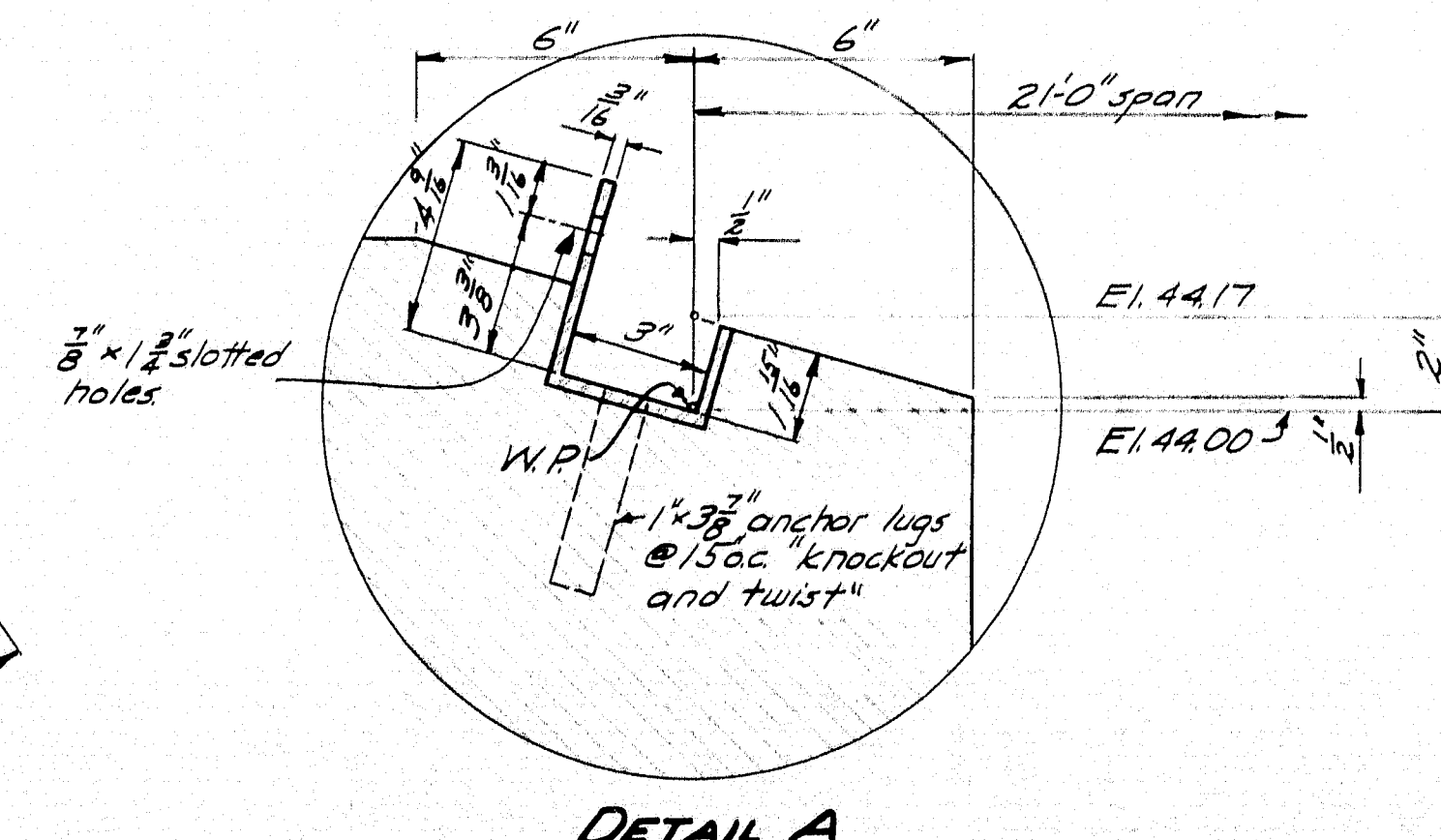
SECTION A-A



SECTION B-B

MATERIAL REQUIRED

One sectional plate arch constructed of #3 gage galvanized corrugated metal to dimensions shown (2' depth and 6' pitch of corrugation) complete with galvanized bolts and unbalanced channel. A slight variation may be made in the rise and span of the arch with the approval of The Engineer. Pay length of arch = 63' 0" (ave. of springing line lengths).
6" #6 reinf. steel bars 30' 0" long to be spliced to 6" #6 reinf. steel bars 36' 0" long. Concrete classification for Abutments-Class XX Loading-H/15-44.
Specifications-A. A. S. H. O. Standard Specifications for Highway Bridges, 1953.
The reinforcing steel shall conform to A. S. T. M. Specifications A 305-49.



DETAIL A

PLAN & TRACE-RISSEL	BRIDGE- 5557
CHECK- Mollicone	
STATE HIGHWAY COMMISSION BRIDGE DIVISION	
SHELDON BRIDGE	
OVER	
WARREN BROOK	
IN THE CITY OF	
BELFAST	
WALDO COUNTY	
BRIDGE DETAILS	
SHEET 3 OF 3	AUGUSTA, MAINE
	MAY, 1953